

# FOREST RESOURCES




# ALABAMA FOREST FACTS

Trees have always been a fundamental touchstone for Alabama's viability. The state has one of the most productive timberlands in the world. Alabama's forest resources are a critical component as a subset of North America's production of wood products - and continues to grow. Additionally, Alabama's forests lie within the heart of the most productive geographical area of the United States. Approximately 93% of Alabama's timberland is owned by families, private individuals, or companies. Less than 10% of this timberland is publicly owned, which is the opposite of many western U.S. states.

Annual inventories of American forests from the U.S. Forest Service's Forest Inventory Analysis (FIA) program data show how the state's volume of sustainably-grown timberland has increased from 39 to 44 billion cubic feet since 2015. Even as the state supports a vast forest products sector, it continues to add a little more than 2% of tree volume year after year. According to FIA data, the proportion of softwood versus hardwood, by volume, is about as close to an even split as possible. The availability of sustainable fiber attracts capital investment and creates jobs! Alabama's sustainably-managed timber resources are world class, continually growing in supply, and will continue to position the state as an attractive target for forest industry and more.

Alabama's forest inventory data is the **most current in the United States.**



The state supports a vast forest products sector yet continues to add tree volume year over year at a rate of **2 TO 2.5% PER YEAR**

(SOURCE: USDA/USFS/ALABAMA FORESTRY COMMISSION, 2020)



### CLEANING THE AIR

Private forest landowners are sequestering the emissions of **3.6 million cars annually** driven on Alabama's roads.



### GROWING OXYGEN

Private forests produce enough oxygen for **214 million citizens** to breathe every year.



### FORESTS TO FAUCETS

**60% of Alabama's surface water** flows through private forests.



### SAFE DRINKING WATER

Alabama residents get more than half their public drinking water from private forests.



### STORING CARBON

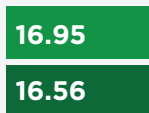
Alabama's forests are estimated to have a 'sea' of stored carbon with a volume of approximately **1.16 billion metric tons.**

(SOURCE: FOREST LANDOWNERS ASSOCIATION, 2020)

Acres of forest land (million acres)



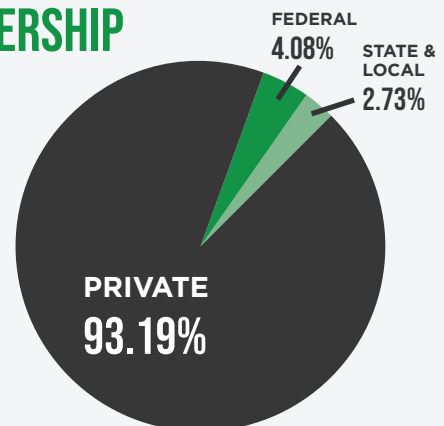
Number of living trees on forest land (billion trees)



Volume of live trees on forest land (billion cubic feet)



## OWNERSHIP



(SOURCE: USDA/USFS, 2020)

# FORESTRY INDUSTRY IMPACT

10

RANK: TOP TEN PRODUCTION WITHIN THE U.S.

for Lumber, Pulp, Paper/  
Paperboard, and Wood Panels



PAYROLLED FOREST INDUSTRY BUSINESSES: 1,472

(SOURCE: AIDT/EMSI Q1, 2021)



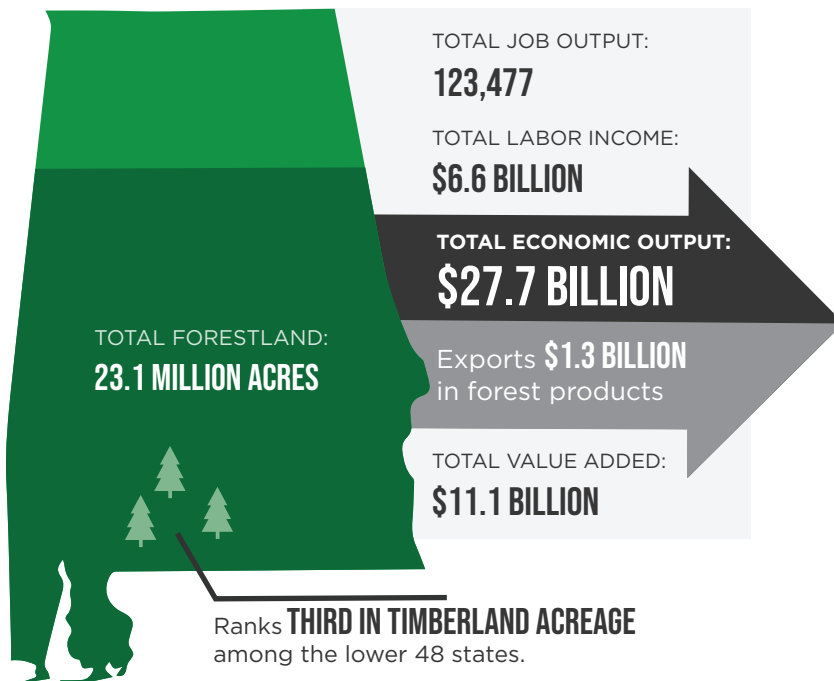
INDUSTRY CAPITAL INVESTMENT: \$6.7 BILLION in the last decade

(SOURCE: AIDT/EMSI Q1, 2021)



CONCENTRATION: Alabama has **157%** more forest industry jobs than you would expect to find in a typical average forested U.S region

(SOURCE: AIDT/EMSI Q1, 2021)



(SOURCE: JACKSONVILLE STATE UNIVERSITY, IMPLAN)

The forest industry remains critically important for Alabama's economy. It is a key component in the state's value-added supply chain and is among the top manufacturing sectors in the state, as well as the most important industry in rural Alabama. Several attributes make it a very positive business climate for the forest industry including a vast transportation infrastructure (road, rail, and waterway), hundreds of potential site locations, port access, one-stop environmental permitting, low taxes, industrial training, right-to-work, and locations convenient to large demographic markets. An investor needs to be confident that investing new capital in Alabama's timberland will return value for decades. Established, existing industries will also continue to enjoy a valuable and economical footprint for the future.

The forest industry has been selected as one of seven marketing targets for recruitment within *Accelerate Alabama* - the state's marketing strategic guideline. Forest industry is a major strategic target for economic development for the Alabama Department of Commerce. Also, the Economic Development Association of Alabama has included forestry within the target market sectors of the Rural Development Initiative. Wood is good for Alabama—always has been—always will be. A sustainable, renewable asset.



## ALABAMA PRODUCES A VARIETY OF WOOD-BASED PRODUCTS INCLUDING:



- LUMBER
- PULP & PAPER
- FLOORING
- FURNITURE
- CABINETRY
- MILLWORK
- CONTAINERS
- TRUSSES
- PLYWOOD
- VENEER

- CROSS LAMINATED TIMBER
- LAMINATED VENEER LUMBER
- ORIENTED STRAND BOARD
- MEDIUM DENSITY FIBERBOARD
- PRESERVATIVE TREATING
- CONVERTED PAPER
- POLES & PILINGS
- GLULAM
- PELLETS
- OTHER MISCELLANEOUS WOOD PRODUCTS



Alabama forest industry job concentration is **2.57 times** the national job concentration

(SOURCE: AIDT/EMSI Q1, 2021)

# ALABAMA'S FOREST INDUSTRY DISTRIBUTION

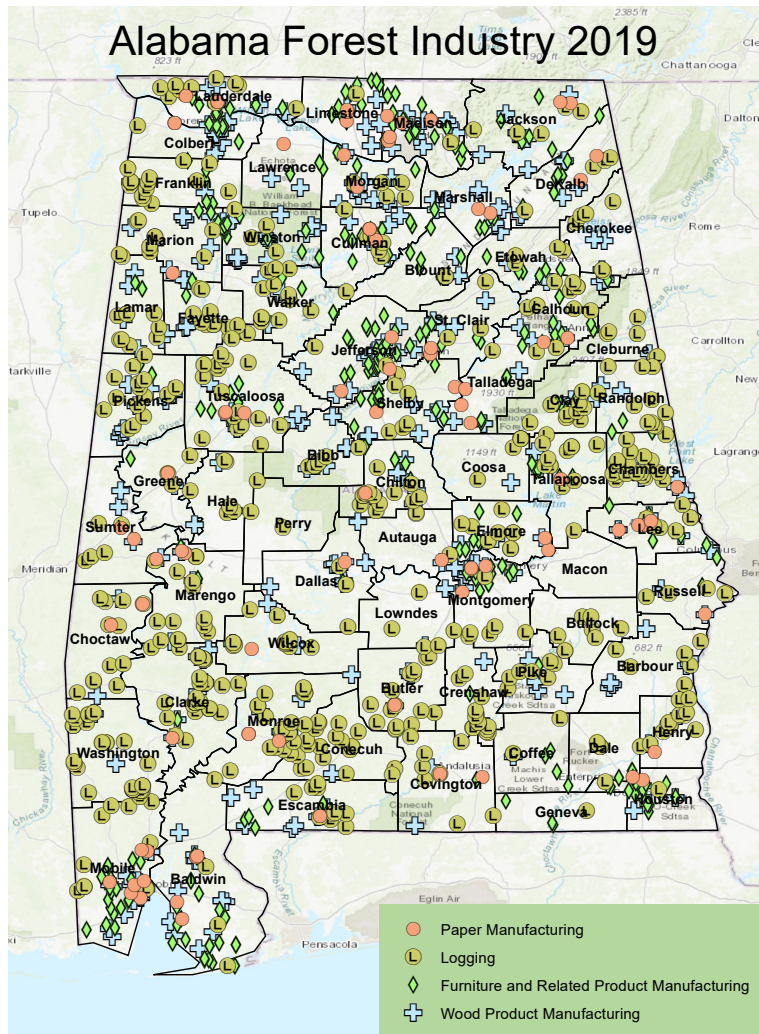
Every county is affected by the state's forest industry and is considered

**THE MOST IMPORTANT RURAL MANUFACTURING SECTOR IN ALABAMA**

**3<sup>RD</sup>** NATIONALLY IN THE FOREST PRODUCTS SECTOR'S CONTRIBUTION TO STATE ECONOMY

1	Arkansas	3.01%
2	Mississippi	2.98%
3	Alabama	2.66%
4	Oregon	2.35%
5	Maine	2.23%

(SOURCE: ALABAMA POWER, CHMURA)



Alabama Department of Labor  
Labor Market Information Division

Source: Alabama's Quarterly Census  
of Employment and Wages, 2019

If Alabama's forest industry would disappear, the state would lose approximately

**\$5.8 BILLION**  
in total earnings,

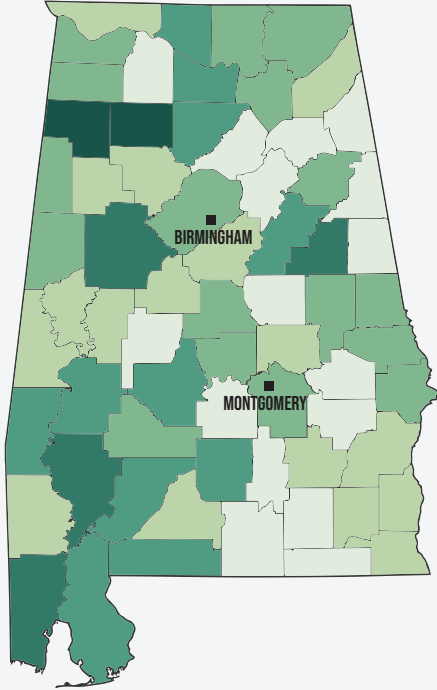
**111,000+**  
jobs, and

**\$492 MILLION**  
in taxes

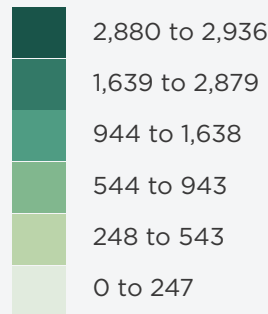
(SOURCE: AIDT/EMSI Q1, 2021)

**MADE IN  
ALABAMA**

# FOREST INDUSTRY WORKFORCE DEVELOPMENT



## 2020 JOBS



## WORKFORCE IS THE GREATEST ASSET FOR A COMPANY

Workforce development is critical to the sustainability of Alabama's economy and manufacturing sector - particularly for our forest industry. There is a workforce shortage recognized throughout the nation and the South. Alabama has recognized the need to recruit additional qualified and skilled workers for our manufacturing sector and is ushering in new, exciting, and effective initiatives. Our state has a significant wood-based workforce supporting rural Alabama communities, and the industry continues to expand. The *ForestryWorks!* initiative has been a successful model for effecting and attracting workers for Alabama's wood-based industry. Early intervention is the key. Alabama citizens are our greatest economic development asset.

**ForestryWorks!** is a collaborative effort by the Forest Workforce Training Institute and other partners within the forest industry to develop a pipeline of qualified workers for the logging and wood product manufacturing industries.

Alabama's **ForestryWorks!** is the **ONLY WORKFORCE DEVELOPMENT PROGRAM DEVELOPED FOR FOREST INDUSTRIES IN THE UNITED STATES**

**FORESTRY IS ONE OF THE SOUTHEAST'S LARGEST INDUSTRIES**



SOURCE: ALABAMA FOREST WORKFORCE TRAINING INSTITUTE